

100+ best ideas for KITCHENS & BATHS

styleathome

Special Issue

fresh STYLE SECRETS!

**HOTTEST
TRENDS
DESIGNER
LOOKS
PERFECT
PAINTS**

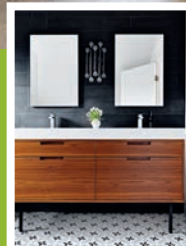
**LUXE
ENSUITE
ESSENTIALS**



**COLOURFUL
KITCHEN
CUES**



**DRAMATIC
BATHROOM
MUST-HAVES**



TVA PUBLICATIONS

DISPLAY UNTIL MAR. 31, 2019 \$9.99



styleathome.com



fresh START

Have you ever wondered how designers achieve photo-ready results? Here are the stories behind the makeovers of three fabulous spaces.

get the look

clean-lined modern



DESIGNERS

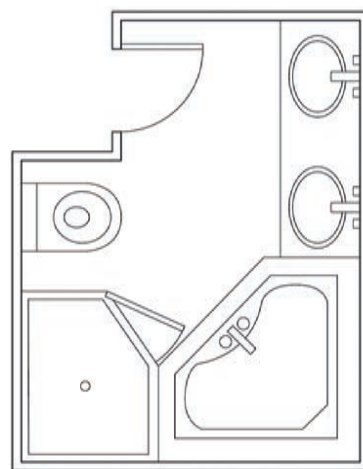
Alana Firestone
and Jordy Fagan,
Collective Studio

PROBLEM

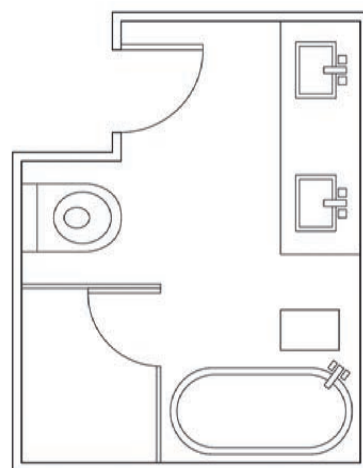
Dull and dated '90s
builder-basic aesthetic

FLOOR PLAN

BEFORE



AFTER



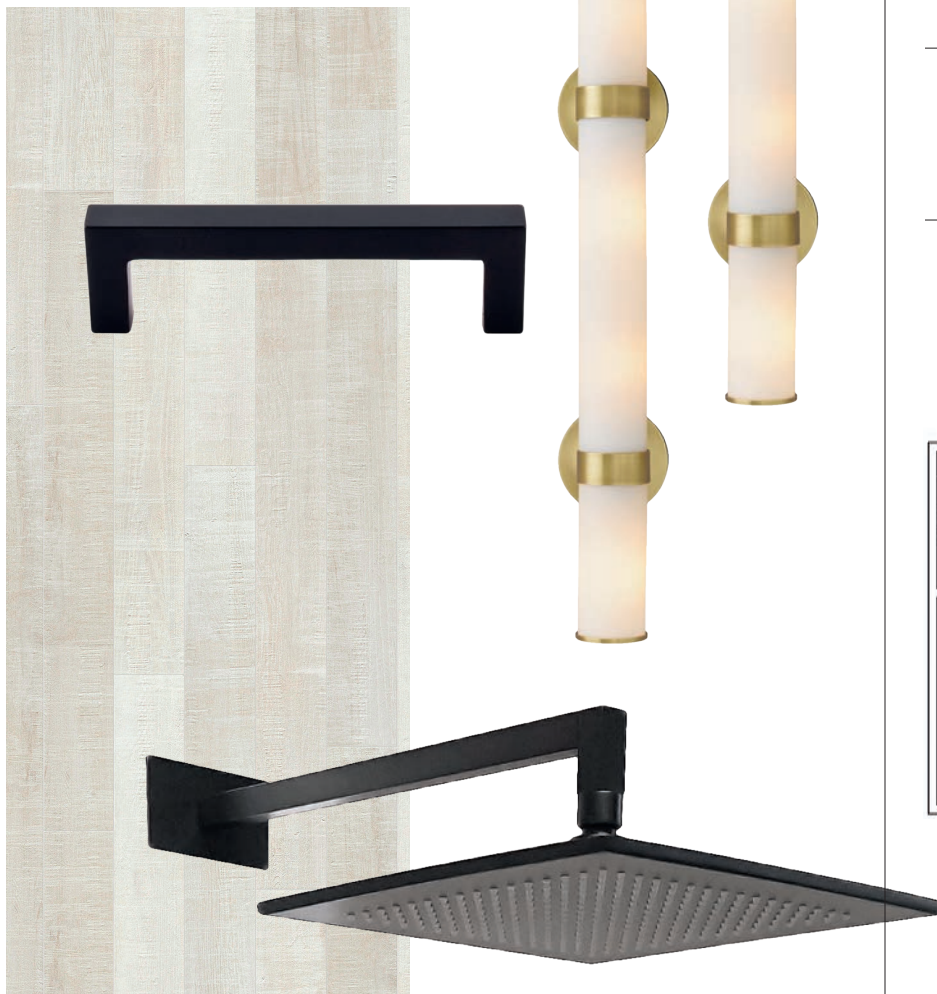
SOLUTION

“TRUE TO THE ROOM’S 1990S ROOTS, nearly every fixture was installed on an angle, and a big glass-block window was the ‘star feature’ above the tub, which ate up one corner of the room. The homeowners, who have two young sons, didn’t want to give up on having a tub, shower and double vanity, so we worked on a few layouts that would make it possible to have all three. Ultimately, the main pieces were left in the same layout to capitalize on the existing window and plumbing locations. That said, the new elements – installed without any angles! – make the space feel totally fresh. A curbless shower with a floating Caesarstone bench has a much more modern feel, and streamlined fixtures enhance the style. Marble-look porcelain floor tiles are more low maintenance than the real thing – meaning less work and more time to enjoy the renovated room!”

CLOCKWISE FROM TOP LEFT Jason Wu powder-coated brass TempAssure Thermostatic **SHOWER FIXTURE** in Matte Black, Brizo, brizo.com; steel, zinc alloy and glass Lander **SCONCE** in Antique Bronze, Crate and Barrel, crateandbarrel.ca; Stormy Monday 2112-50 **PAINT**, Benjamin Moore, benjaminmoore.ca; Jason Wu powder-coated brass widespread **FAUCET**, Brizo, brizo.com; acrylic Magino **STOOL**, Ginger’s, gingers.com.

get the look

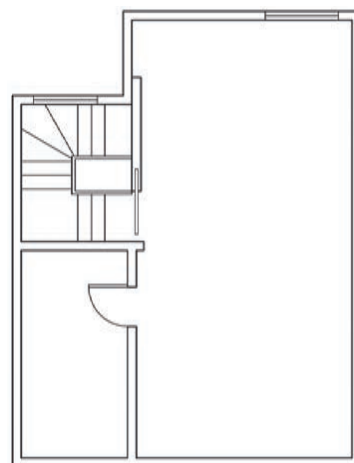
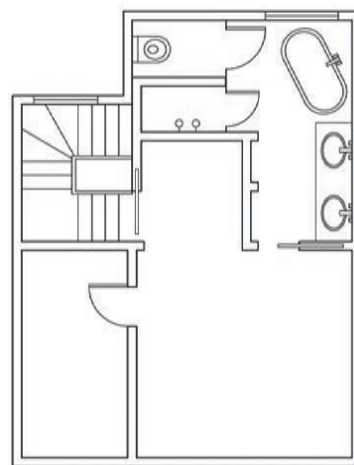
spa-like retreat

**DESIGNER**

Ali Budd,
Ali Budd Interiors

PROBLEM

Transforming an unused attic with awkward ceiling angles

FLOOR PLAN**BEFORE****AFTER****SOLUTION**

“**LOCATED IN A THIRD-STOREY ADDITION,** this bathroom is part of a master suite that made use of an empty attic space. The homeowners wanted the area to feel like a spa or boutique hotel – a retreat with a bit of an edge. An attic space is always a little tricky to work with, as it’s important to think about playing with the angles of the ceiling. We incorporated little design tricks like placing the bathtub where the lowest part of the ceiling is, since the homeowners won’t be standing there. In terms of the aesthetics, the owners mostly left it up to us, save for requesting a black and white scheme. Our interpretation mixes the shades with grey and wood. It’s a contemporary look but still beautifully classic.”

CLOCKWISE FROM TOP LEFT Porcelain Wooden **FLOOR TILE** in White, Stone Tile International, stone-tile.com; Sutton glass and plated brass Grand **SCONCES** in Lacquered Burnished Brass, RH, rh.com; powder-coated brass Caso **SHOWER FIXTURE** in Matte Black, Taps Bath Centre, tapsbath.com; painted zinc alloy Loft **PULL** in Black, Ginger’s, gingers.com.

get the look

sculptural organic

DESIGNER

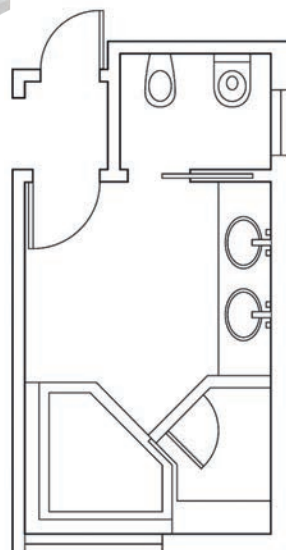
Montana Burnett,
Montana Burnett Design

PROBLEM

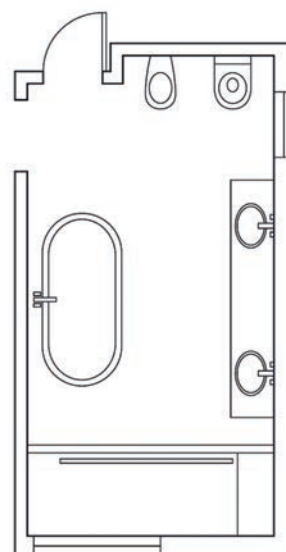
Dated design that didn't maximize style or function

FLOOR PLAN

BEFORE



AFTER



SOLUTION

“**THIS ENSUITE HAS GENEROUS** square footage, but the original floor plan chopped up the room, cramming the shower and tub at one end and making the space feel tight. To open it up, we removed the old shower and bathtub, and shifted the new tub to an unused wall, instantly making the ensuite feel more modern and inviting. This also freed up space for a larger vanity. The homeowner has three children who all use this room, but we still needed to make it feel polished and grown-up, so we included dramatic feature walls, a free-standing tub and a massive shower. The new, more functional vanity adds ample storage space, allowing the design to focus on sightlines that show off the new fixtures. The owner was initially drawn to this room because of its scale, and now that it's redesigned with an attention to stylish details, it feels warm, spacious and chic.”

CLOCKWISE FROM TOP LEFT Hand-woven maple wood PREN 03 **PENDANT LIGHT**, Louise Tucker, lousietucker.net; Dornbracht Mem chrome-plated brass widespread **FAUCET**, Ginger's, gingers.com; Be Collection Wetmar Bio BBE 02 **BATHTUB**, Wetstyle, wetstyle.ca; Jet Black 2120-10 **PAINT**, Benjamin Moore, benjaminmoore.ca;